



## Roof Insulation Survey Form (SF008)

12 Dec 2022

**Complete**

<b>Actions</b>	<b>0</b>
<b>Conducted By</b>	Antony Ellis
<b>Conducted on</b>	12 Dec 2022 11:30 AM GMT
<b>Site Address</b>	Surveyours Ltd, Tonmawr 2000 Business Park, Port Talbot SA12 9UU (51.6536325, -3.7361816)

## Property Information

### Property Type

House



Photo 1



Photo 2

### Any Parking / Access Issues?

No

## Proposed Roof Information

**Number of Roofs Requiring Insulation**

1

**#1 Roof Type**

Pitched

**#1 Sub Roof Type**

Room in Roof

**#1 Sloping Ceiling Area (M<sup>2</sup>)**

13

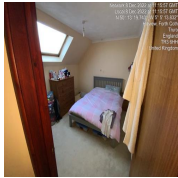


Photo 3

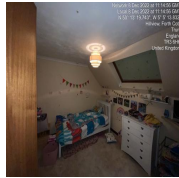


Photo 4

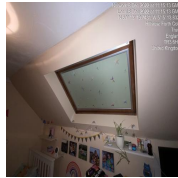


Photo 5



Photo 6

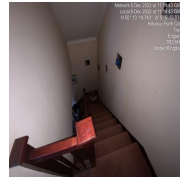


Photo 7

**#1 Flat Ceiling Area (M<sup>2</sup>)**

22

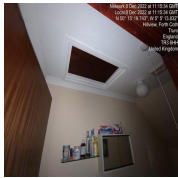


Photo 8



Photo 9

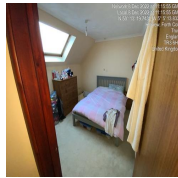


Photo 10

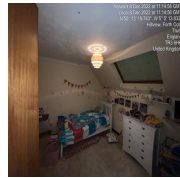


Photo 11

**#1 Stud Wall Area (M<sup>2</sup>)**

16

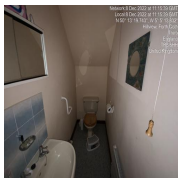


Photo 12

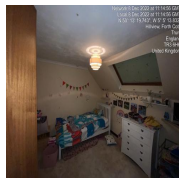


Photo 13

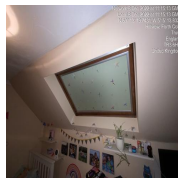


Photo 14

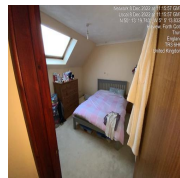


Photo 15

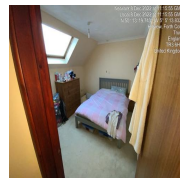


Photo 16

**#1 Gable & Party Wall Area (M<sup>2</sup>)**

17

Party wall has living space adjacent

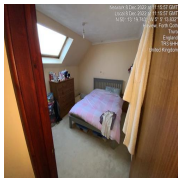


Photo 17

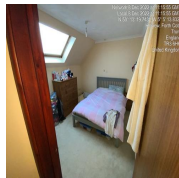


Photo 18

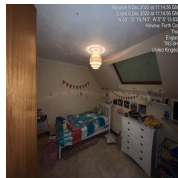


Photo 19

**#1 Residual Loft Space Area (M<sup>2</sup>)**

13



Photo 20



Photo 21



Photo 22



Photo 23

---

## #1 Residual Loft Space Existing Insulation Depth

**101**  
From 0 to 370



Photo 24

## Additional Evidence

### Addition information

---

## Additional Evidence

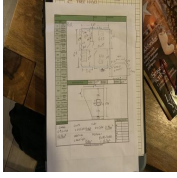


Photo 25

---

## Media summary



Photo 1



Photo 2



Photo 3



Photo 4



Photo 5



Photo 6



Photo 7



Photo 8

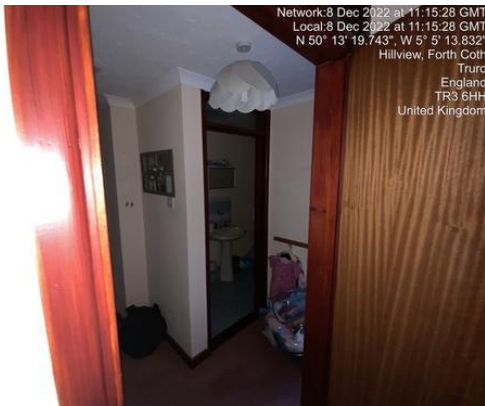


Photo 9



Photo 10



Photo 11



Photo 12



Photo 13



Photo 14



Photo 15



Photo 16



Photo 17



Photo 18



Photo 19

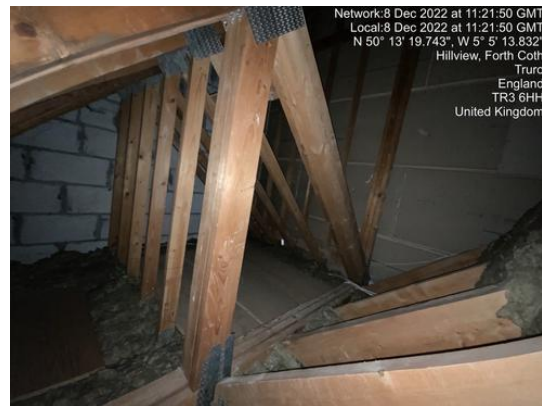


Photo 20



Photo 21

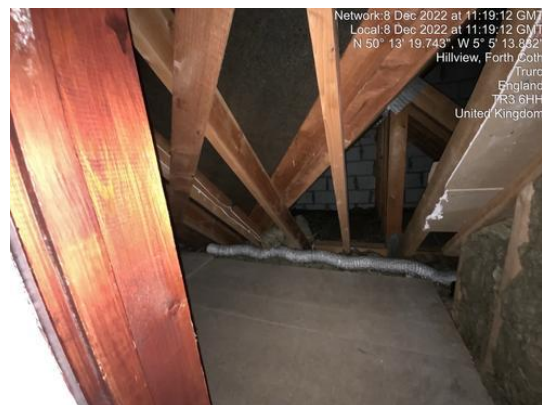


Photo 22





Photo 23



Photo 24

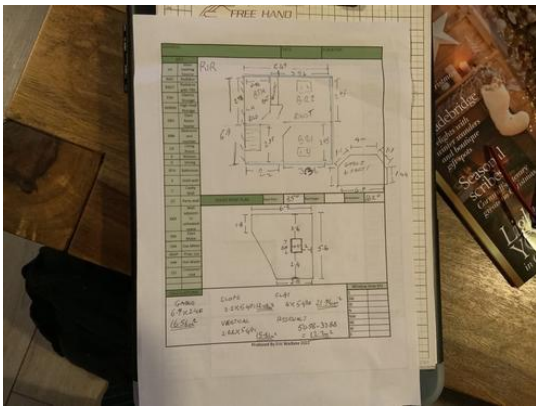


Photo 25